



PUTTING TxDOT  
ON THE MAP



# A Data Awakening

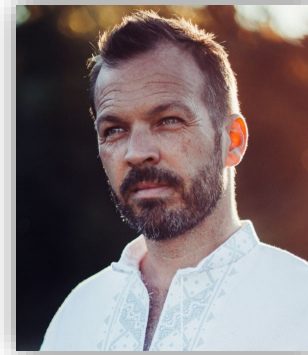
From baby steps to giant leaps...how data is transforming at TxDOT

Jennifer Lash, Chris Bardash  
**2022 TNRIS GIS Forum**  
March 10<sup>th</sup>, 2022



Jenn Lash,  
PMP

Statewide GIS  
Program Manager

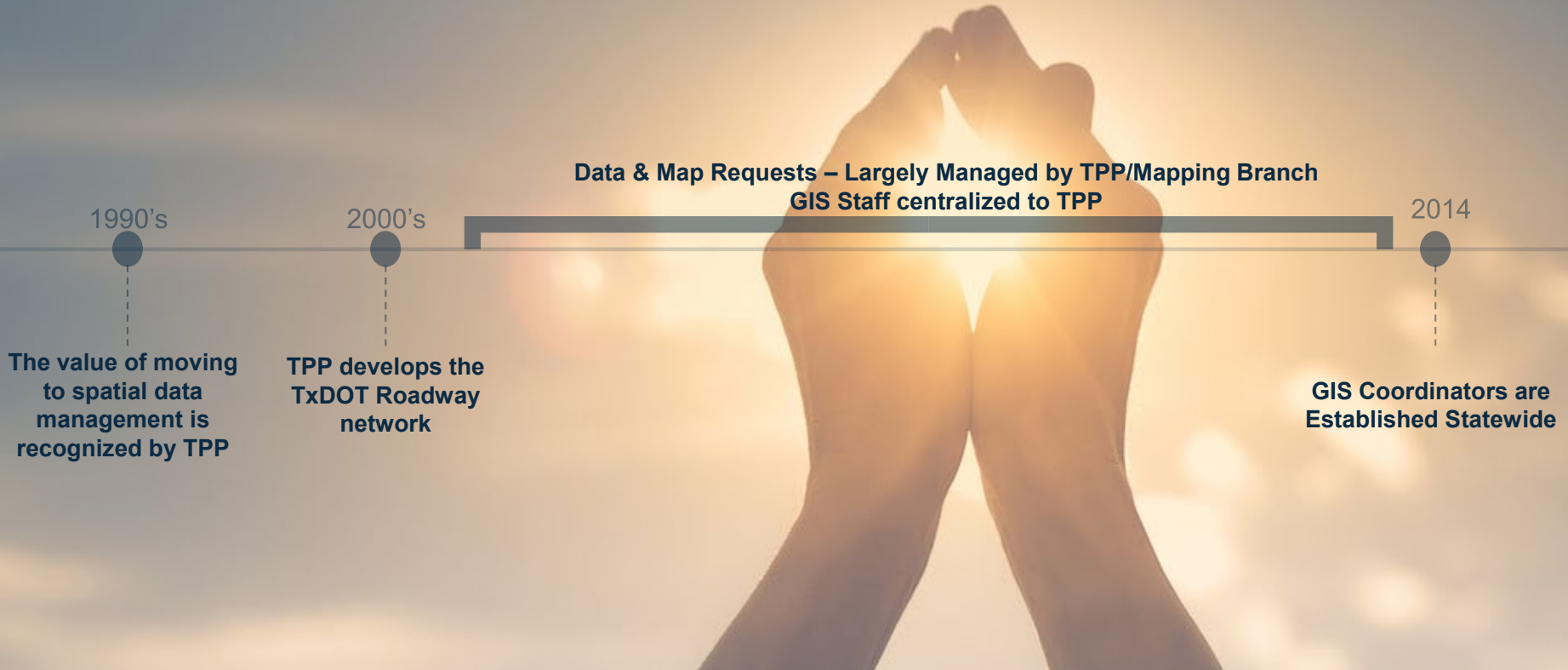


Chris Bardash,  
GISP

Mapping Branch  
Manager



‘Awakening’ is not changing  
who you are,  
but discarding  
who you are not.





Various Statewide Initiatives  
Largely Trial and Error

2000s-2010s

2016

**TxDOT Open  
Data Portal  
Launched**

TEXAS DEPARTMENT OF TRANSPORTATION

## OPEN DATA PORTAL

YOUR GATEWAY TO TXDOT GIS DATA

Enter Search Criteria

Welcome to the Texas Department of Transportation's open data portal. The portal is the agency's platform for exploring and downloading GIS datasets. Search for data using keywords or categories to quickly view and display content. The portal allows users to view datasets on a map, filter data using queries, and download data in various formats. Want to learn more? View our datasets using tools like the Statewide Planning Map and Project Tracker.

TxDOT.GOV   Statewide Planning Map   Project Tracker   Data Dictionary   Training   Maps





## ✓ CAN WE SUPPORT THIS JOURNEY?



Various Statewide Initiatives  
Largely Trial and Error  
Value of GIS Established

2000s-2010s

2016

TxDOT Open  
Data Portal  
Launched

2018

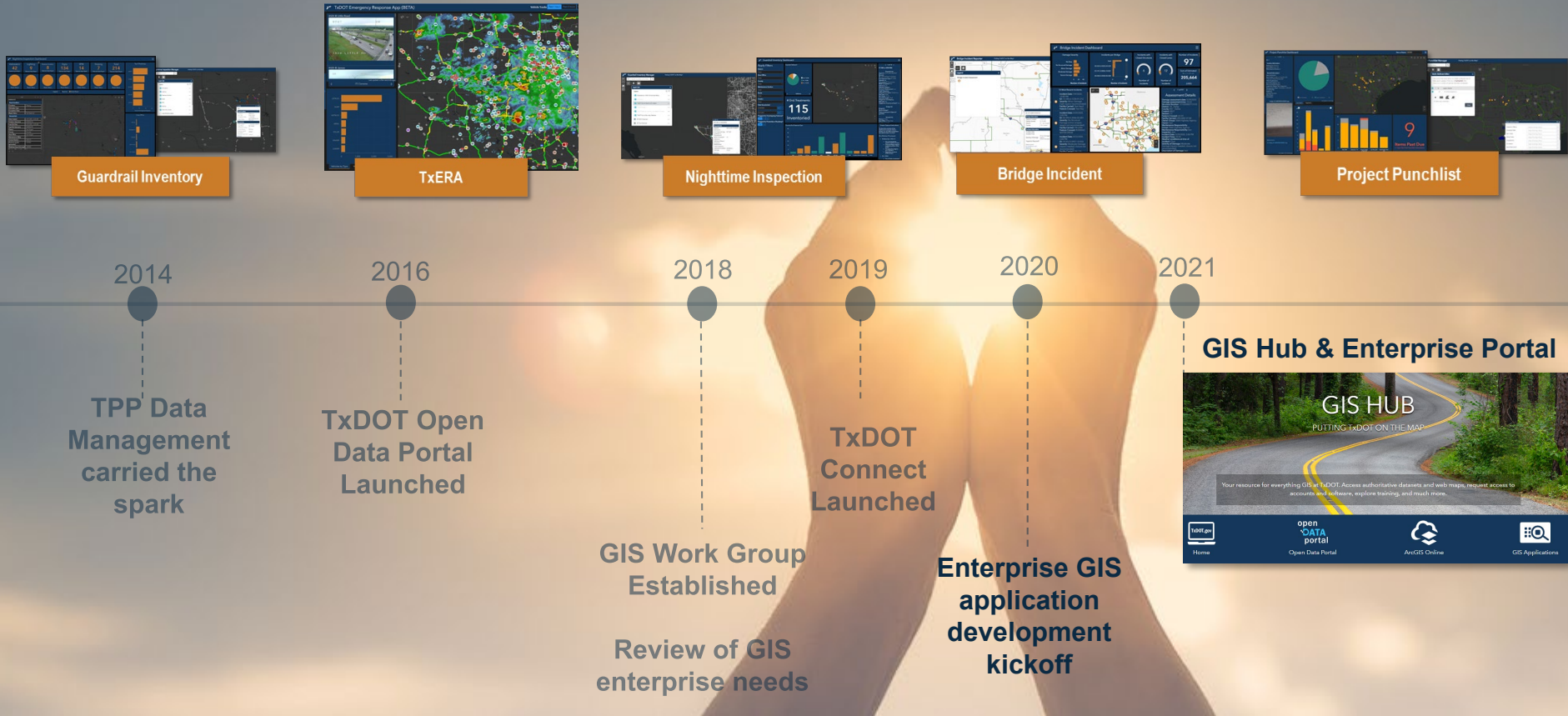
GIS Work Group Established

Review of GIS enterprise needs

2019

TxDOT  
Connect  
Launched

# Nurture the spark







## ✓ SHOULD WE SUPPORT THIS JOURNEY?

### Statewide GIS Program Launched



# Statewide GIS



PUTTING TxDOT  
**ON THE MAP**





PUTTING TxDOT  
**ON THE MAP**

*"A Connected TxDOT, delivering projects and managing infrastructure through the advancement of geospatial technologies and enterprise capabilities"*



PUTTING TxDOT  
ON THE MAP

## Statewide GIS

Connecting TxDOT with GIS tools, resources and information to put TxDOT on the map!

### Guiding Principles

- Pursue Value
- Learn Together
- Data Quality
- Go Digital

### Mission Critical Priorities

- Authoritative standards
- GIS education for the enterprise
- Discoverable data
- Enabling digital project delivery and supply chain



Field/Office Workers

Improved ability to share information



Analysts

Faster access to updated data



Managers

Reliable information for decision making



Enterprise

One TxDOT, focused on Connecting you with Texas!



Public

Efficient TxDOT delivery of safety, mobility, reliability and transparency

## Systems & Data

Recognize strategic value of spatial data to the business of the DOT and drive support

## Processes & Governance

Availability of geospatial data, maps, and information.

## Workforce & Culture

Empowered, connected workforce using GIS visualizations that positively impact our delivery, maintenance and operations of transportation systems.

Six Months

Assess GIS capabilities, data, and resources.

Year 1

Demonstrate value and build connections with user community and leadership.

Year 2

Expand GIS education & support.

Year 3

Demonstrate GIS as a core competency of DOT.



PUTTING TxDOT  
ON THE MAP

Statewide GIS

## Talk to the Team

Using, accessing & trusting existing TxDOT data sources

Sharing existing data

Creating relevant & useful internal content

Talking about the value of GIS

Setting agency standards & managing the data lifecycle

GIS dedicated personnel

TxDOT specific training for GIS tools



\*Initial priority, no particular order

MENTI: What things do your teammates want most out of GIS?

Six Months

Year 1

Year 2

Year 3



PUTTING TxDOT  
ON THE MAP

## Statewide GIS

# Talk to the Team

“

GIS is a tool that my district (districts) have used for several years. We keep track of many assets and components in the district. Things like rumble strips, cable barrier, stockpiles of portable barrier, salt stockpiles, striping, types of surfaces on the roadways, and guardrails. **The GIS tools are a must** for a district to keep up with the demands of the 4-year maintenance management plan and the 4-year district safety plan. We need this expertise to be at a high level, we need this to become an **everyday component to our operation.**

**Carl L. Johnson, P.E.**  
Ft. Worth District Engineer



Six Months

Year 1

Year 2

Year 3



PUTTING TxDOT  
ON THE MAP

Statewide GIS

# Building the GIS Community

GIS Coordinators & Contacts

GIS Community of Practice

GIS Training & Events

Help!

Ideas & Innovation

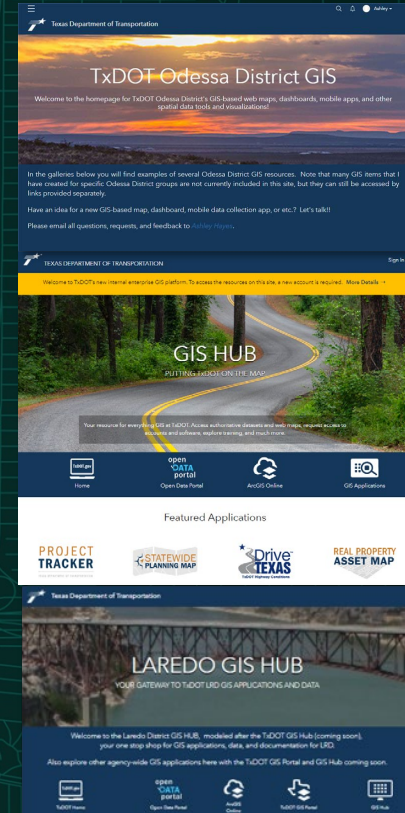
GIS Innovator

GIS Work Group

GIS Champions



## Multi - Year Strategic Plan



Six Months

Year 1

Year 2

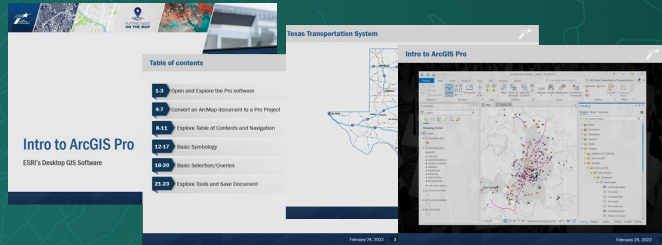
Year 3



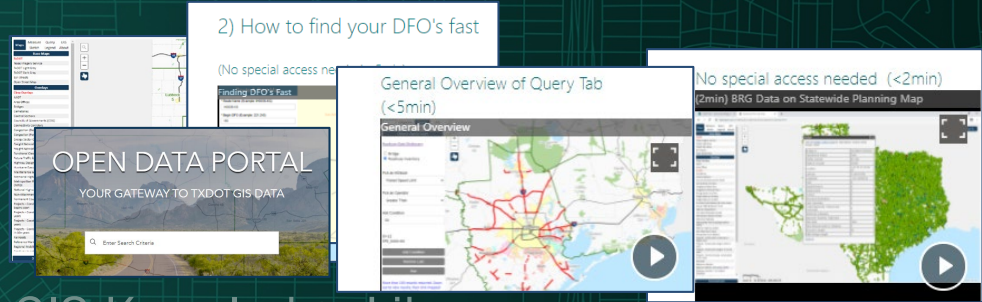
# Statewide GIS

**PUTTING TxDOT  
ON THE MAP**

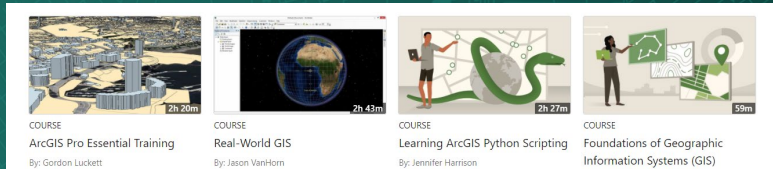
## Educational Resource for the Agency



### TxDOT GIS ELM Courses



### GIS Knowledge Library



### Linked in Learning

- Leadership & Staffing
- SME Lunch and Learns
- Office Hours
- Customized Learning on Request
- Study Sessions

Six Months

Year 1

Year 2

Year 3





## Statewide GIS

# Learning GIS as a Core Competency

PUTTING TxDOT  
ON THE MAP

EASILY Accessible, authoritative data for both internal and external use

Enterprise LRS (eLRS)

Standardized Map Templates & Data Access

Expanded GIS Tools & Platforms

GIS SME's enterprise-wide

Digital Delivery Data opportunities

Enterprise training, knowledge & adoption of GIS tools.

Empowered data owners!



Six Months

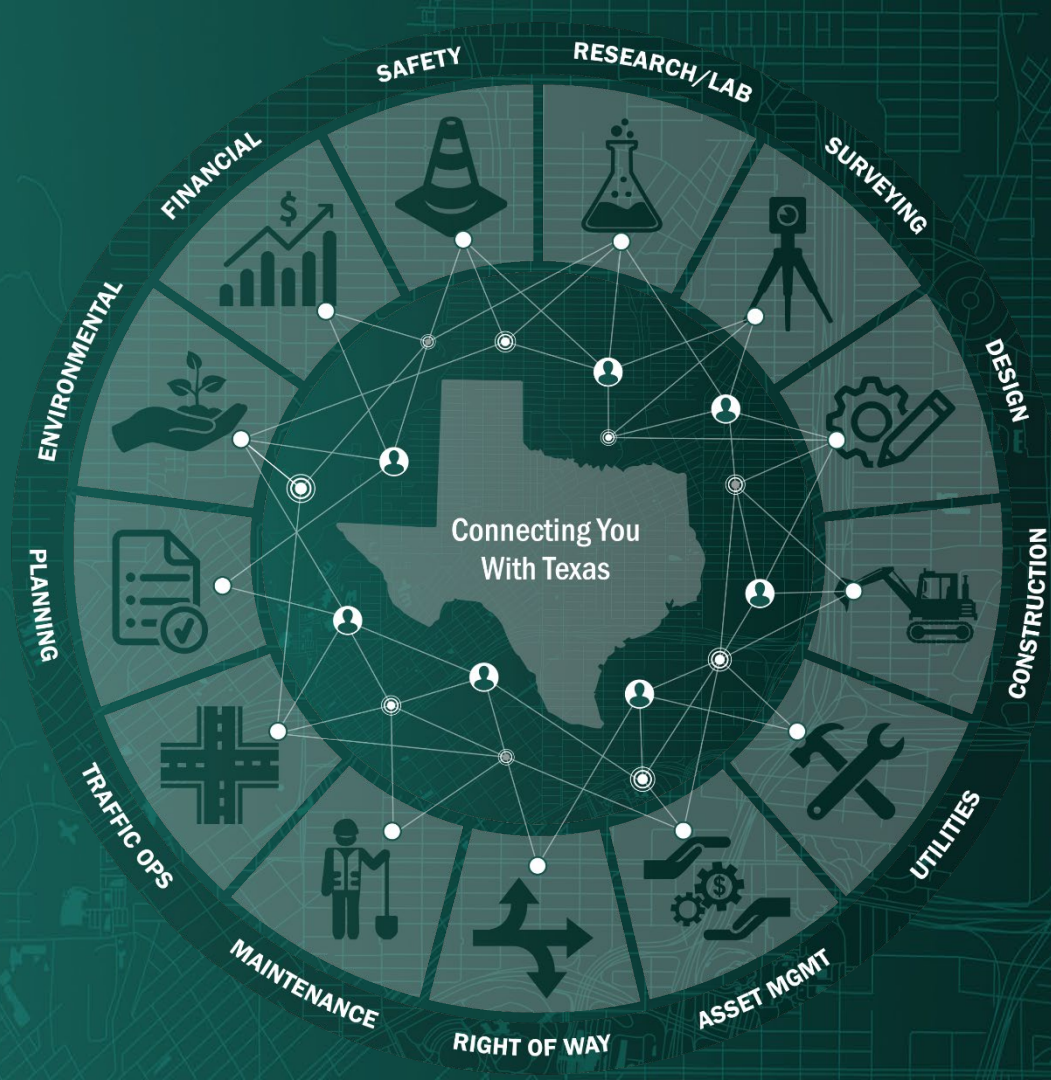
Year 1

Year 2

Year 3



# PUTTING TxDOT ON THE MAP



**Start and  
Connect  
with the  
people!**

**Establish a  
vision and  
revisit often.**

**Carry the  
spark!**

**Have passion  
and an 'idea'  
that supports  
enterprise  
growth.**

**Find,  
support  
and lean on  
champions.**



PUTTING TxDOT  
ON THE MAP

**Value = user  
can get job  
done well!**

**Focus on the  
big wins**

**We are trying  
to help  
people solve  
problems**

**Use real  
examples that  
show value to  
*them***

**Carry the  
spark**

Start and Connect  
with the People!

Have passion and an 'idea'  
that supports passionate  
growth

Make a vision and  
revisit

Find, support and lean  
on champions

**Grow the  
community**

**Everyone has a plan until you  
get punched in the face**

**Get your  
tech  
moving**

**Make  
requirements  
less dumb**

**Carry the  
spark**

Start and Connect  
with the People!

Have passion and an 'idea'  
that supports passionate  
growth

Make a vision and  
revisit

Find, support and lean  
on champions

**Grow the  
community**

Value = user can  
get job done well!

Focus on the big wins

We are trying to help  
people solve problems

Use real examples

**Look for  
gaps**

## Leverage funding opportunities

## Change management really does help

## Be honest with others about timing

### Carry the spark

Start and Connect with the People!

Have passion and an 'idea' that supports passionate growth

Make a vision and revisit

Find, support and lean on champions

### Grow the community

Value = user can get job done well!

Major in major stuff – don't sweat the small stuff

We are trying to help people solve problems

Use real examples

### Look for gaps

Everyone has a plan until you get punched in the face

Get your tech moving

Make requirements less dumb

### Build partnerships to help

**Celebrate release *after*  
people are using it**

**Gain wins worth  
talking about  
and talk about  
them!**

**Pay attention  
to timing.  
Energy flows  
where  
attention goes.**

**Carry the spark**

Start and Connect  
with the People!

Have passion and an 'idea'  
that supports passionate  
growth

Make a vision and  
revisit

Find, support and lean  
on champions

**Grow the  
community**

Value = user can  
get job done well!

Focus on the big wins.

We are trying to help  
people solve problems

Use real examples

**Look for gaps**

Everyone has a plan until you get punched in the face

Get your tech moving

Make requirements less  
dumb

**Build partnerships  
to help**

Leverage funding opportunities

Change management  
really does help

Be honest with others  
about timing

**Celebrate  
wins!**

**GIS knowledge management can help anyone at any level of the DOT**

**GIS is transformative – prioritize GIS staff**

**Everyone can use GIS at the DOT**

**GIS is about connecting with *people* to solve problems together**

**Carry the spark**

Start and Connect with the People!

Have passion and an 'idea' that supports passionate growth

Make a vision and revisit

Find, support and lean on champions

**Grow the community**

Value = user can get job done well!

Focus on the big wins

We are trying to help people solve problems

Use real examples

**Look for gaps**

Everyone has a plan until you get punched in the face

Get your tech moving

Make requirements less dumb

**Build**

**partnerships to help**

Leverage funding opportunities

Change management really does help

Be honest with others about timing

**Celebrate wins**

Celebrate release after people are using it

Gain wins worth talking about

Watch for the right time to move





# PUTTING TxDOT **ON THE MAP**

# Thank you!

## Questions?

### Contact Us

Jenn Lash, PMP  
[jennifer.lash@txdot.gov](mailto:jennifer.lash@txdot.gov)

Chris Bardash, GISP  
[chris.bardash@txdot.gov](mailto:chris.bardash@txdot.gov)