


EVOLUTION OF PHOTOGRAMMETRY

Nearmap
March, 2022

 MAY 2020 | TEXAS STATE CAPITOL, TX
U.S.

 nearmap

YOUR PRESENTERS ARE:



Tyler Behle
Enterprise Account Executive
Nearmap

Tyler is a member of Nearmap's Enterprise Government sales team helping cities and counties across the country realize and harness the power of Nearmap. His passion centers around empowering organizations with creative ways to add value through the use of aerial imagery.

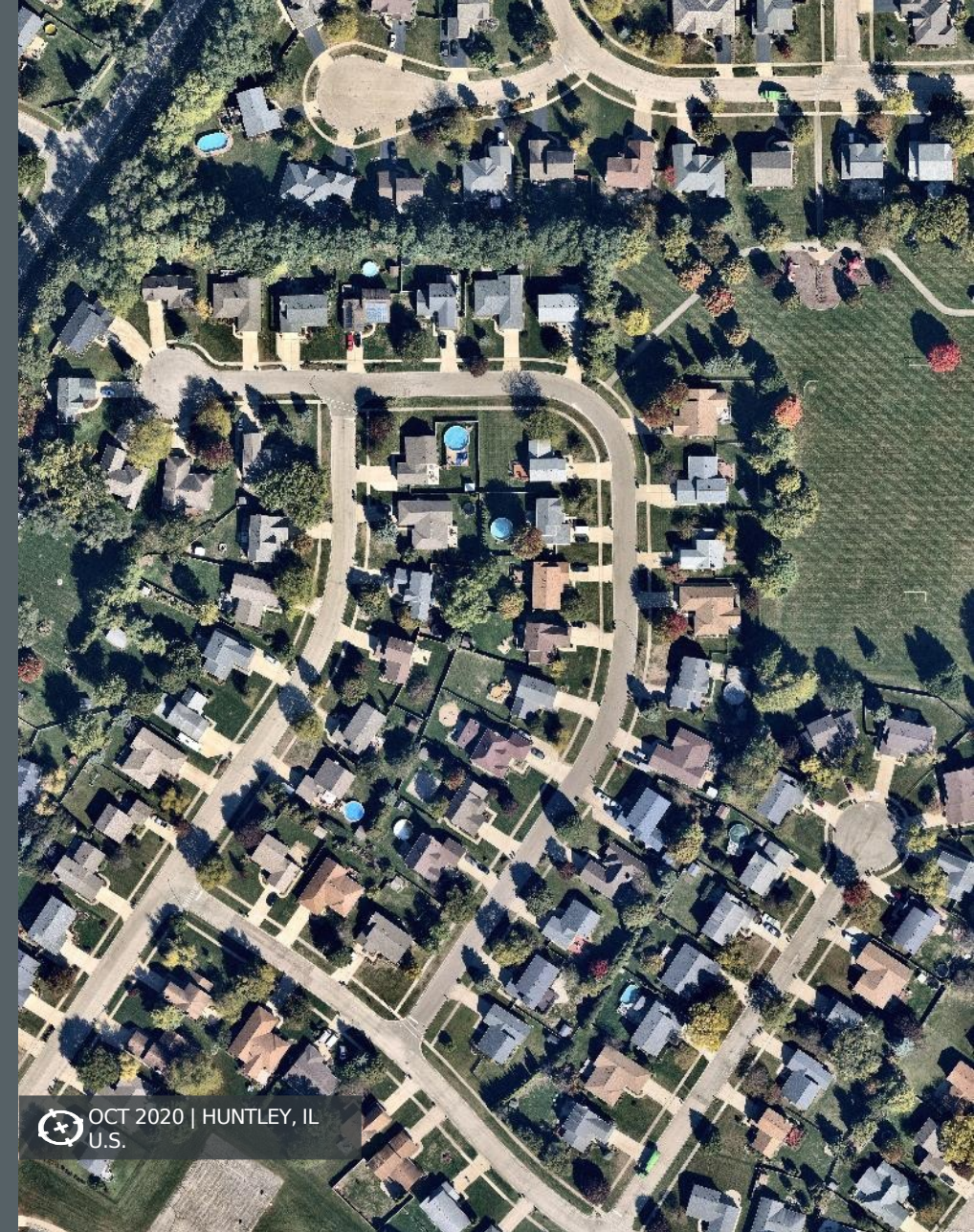


Jackson Adams
Senior Account Executive
Nearmap

Jackson has been with Nearmap for 3 years and has worked with both private companies and public entities. Currently, he is an Account Executive in the local government space and is passionate about the product Nearmap provides. Prior to working at Nearmap, Jackson was a construction project manager/estimator who used a variety of geospatial tools like Nearmap to make life easier.

AGENDA:

- HISTORY OF PHOTOGRAMMETRY/AERIAL IMAGERY
- WHERE WE ARE TODAY
- WHERE DOES NEARMAP FIT INTO THE HISTORY?
 - OVERVIEW OF NEARMAP
- Q&A



PHOTOGRAMMETRY?!

"*PHOTOGRAMMETRY* HAS BEEN DEFINED BY THE AMERICAN SOCIETY FOR PHOTOGRAMMETRY AND REMOTE SENSING (ASPRS) AS THE ART, SCIENCE, AND TECHNOLOGY OF OBTAINING RELIABLE INFORMATION ABOUT PHYSICAL OBJECTS AND THE ENVIRONMENT THROUGH PROCESSES OF RECORDING, MEASURING, AND INTERPRETING PHOTOGRAPHIC IMAGES AND PATTERNS OF RECORDED RADIANT ELECTROMAGNETIC ENERGY AND OTHER PHENOMENA"



+



PHOTOGRAMMETRY

AERIAL PHOTOGRAPHY?!

“TECHNIQUE OF PHOTOGRAPHING THE EARTH’S SURFACE OR FEATURES OF ITS ATMOSPHERE OR HYDROSPHERE WITH CAMERAS MOUNTED ON AIRCRAFT, ROCKETS, AND OTHER SPACECRAFT.”



+

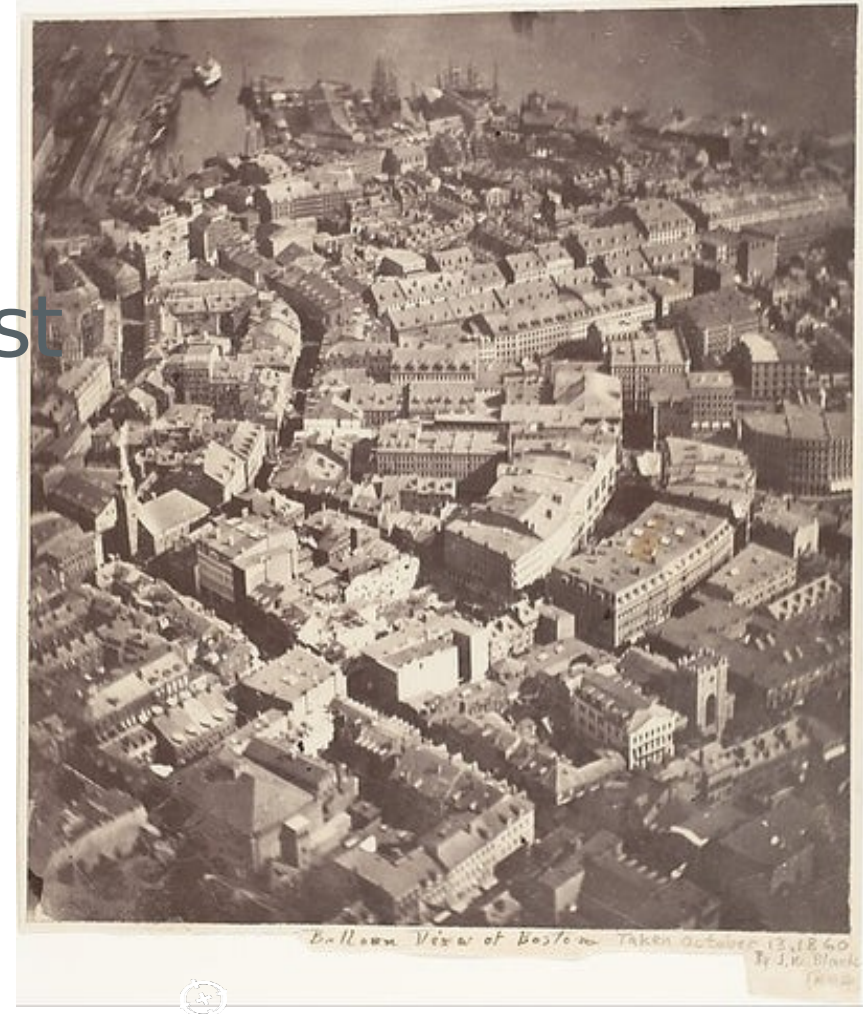


AERIAL PHOTOGRAPHY

LIFTOFF OF AERIAL PHOTOGRAPHY

How was aerial photography first captured?

First "surviving" aerial photograph?



1860 from a hot air balloon by James Wallace Black

EVOLUTION OF AERIAL PHOTOGRAPHY

FIRST UNMANNED FLIGHT OF AERIAL PHOTOGRAPHY?



1882 from a single kite by Arthur Batut

EVOLUTION OF AERIAL PHOTOGRAPHY

What came next?



1907 Pigeon Photography by Julius Neubronner

EVOLUTION OF AERIAL PHOTOGRAPHY

EVENT THAT LAUNCHED AERIAL PHOTOGRAPHY BY AIRCRAFT?



WWI



EVOLUTION OF AERIAL PHOTOGRAPHY

Look at how far we've come!



Series of overlapping photos taken by Sherman Fairchild in the early 1930's, used to make a map of Manhattan Island



IMAGERY ECOSYSTEM TODAY



SATELLITE IMAGING

- 30cm to 3m+ resolution
- Global-scale, frequently updated
- Task based missions
- Macro-environmental analysis



AERIAL IMAGING

- 5 - 30cm resolution
- 2.2 - 3" resolution Nearmap imagery
- Regional-scale, frequently updated
- Multiple high-res formats (ortho, oblique, 3D)
- Fine feature and detail extraction and regional scale



UAV IMAGING

- Sub cm+ resolution
- Project based, restricted coverage
- Multiple high-res formats (ortho, oblique, 3D)
- Fine feature and detail extraction and regional scale

LOCATION INTELLIGENCE

DRONES / GOOGLE EARTH / OTHERS?

Drones = Very high resolution, bespoke flights, current yet costly method to acquire imagery.

(e.g. 1 sq. km per day vs aerial XXXX sq. km per day)

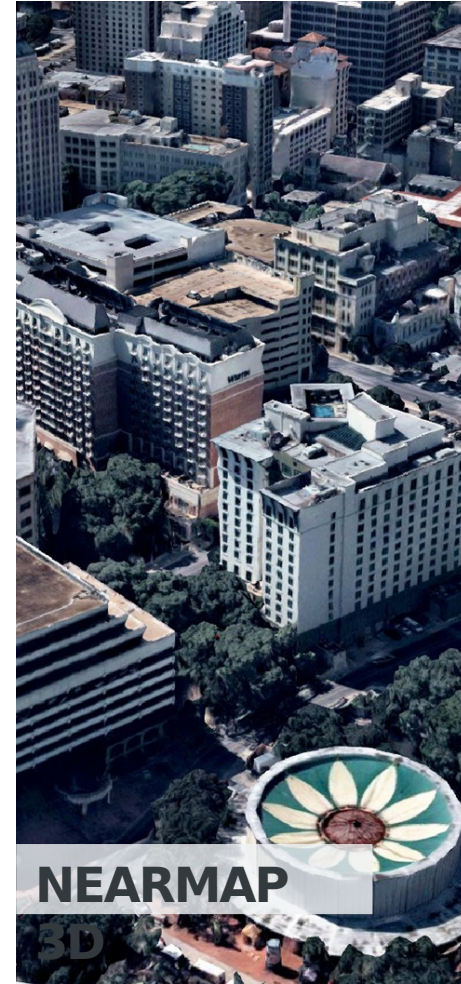
Satellite imagery = lower resolution, e.g. 50cm vs Nearmap 5cm, scalable captures

Google Earth = for consumer use as apposed to commercial use

Other aerial imagery providers = varies greatly by processing times, resolution, product

offerings, and business models

THE BEAUTY OF IT ALL!





WE ARE NEARMAP:

- Headquartered in Sydney, Australia. Listed on ASX – S&P/ASX Global 200 Index Company
- Established in 2007, we have a growing footprint in Australia, USA, Canada, and New Zealand
- Proudly streaming frequently updated spatial content to 10,000+ active customers, globally
- Pioneered and patented the world’s first end-to-end processing pipeline that delivers high resolution location intelligence within days of capture
- In March 2020, Fast Company named Nearmap one of the World’s 10 Most Innovative Enterprise Companies
- Esri Gold Partner since 2019, winning the title “Best New Content Provider” in 2017 with Esri



HOW NEARMAP CREATES AERIAL MAPS.



FAST AERIAL SURVEY OF LARGE AREAS

- Patented HyperCamera
- Collects large areas
- All imagery is 2.2 to 2.8-inch GSD
- 28cm RMSEr



SCALABLE CLOUD-BASED IMAGERY PROCESSING

- Patented processing
- Publishes within days
- Identifies triangulation points
- Creates DEM
- Ortho-rectifies images



DESKTOP-READY DATA SUPPORTING BUSINESS NEEDS

- Instant access
- Industry-leading cloud service
- Accessible via MapBrowser
- Integrates with GIS, CAD
- 3rd party applications

RAPID, INDUSTRY-LEADING DELIVERY
mosaic



Captured: 1 Oct 2017
Louisville, KY

nearmap



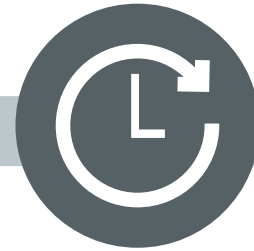


WE PROACTIVELY UPDATE SPATIAL DATA THAT BUSINESSES COUNT ON



1 ALWAYS CURRENT: WIDE-SALE REALITY CAPTURE PROGRAM

Frequently updated aerial survey of large urban and regional areas, up to 3 times a year leaf on and off; accessible 24/7.



2 CONSISTENT: AUTOMATED PHOTOGRAMMETRY PIPELINE

Scalable processing pipeline means content can be delivered within days of capture; with consistent quality and resolution.



3 NO FUSS: ENABLE INSANELY SIMPLE ADOPTION

Instant access via MapBrowser, Esri ArcGIS Marketplace, or APIs. Our simple subscription model means no need to worry about annual procurement and storage.



JAN 2021 | CORONADO, CA
U.S.

OUR TECHNOLOGY



MORE THAN AERIAL IMAGERY

Scalable processing pipeline means content can be delivered within days of capture; with consistent quality and resolution



DESIGNED FOR THE CLOUD

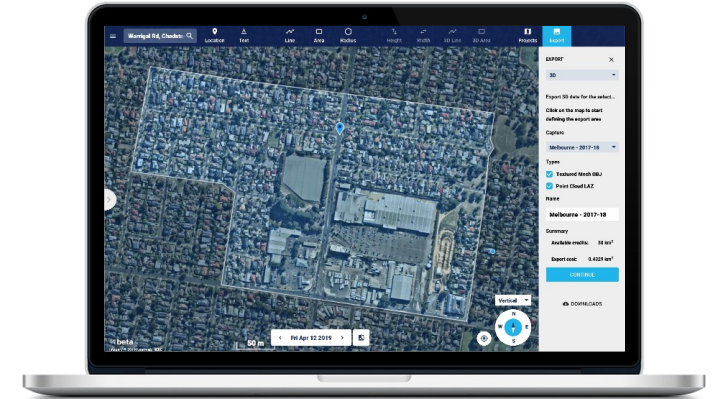
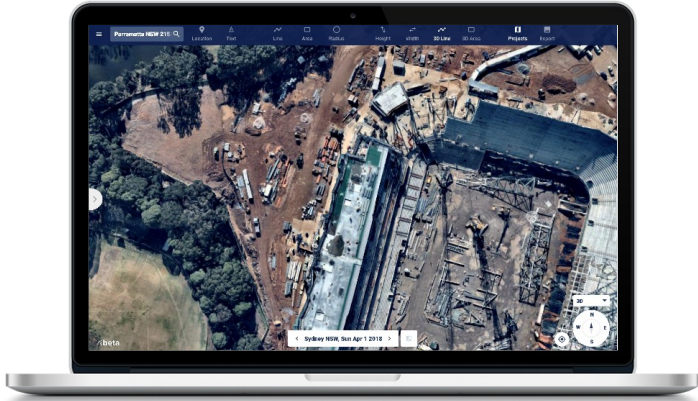
When combined with machine learning algorithms, our imagery delivers deep insights and automated location intelligence for a wide range of industries.



WIDE VARIETY OF DELIVERY MECHANISMS

Let your users access the content in a way that works best for your organization. Simply access content by logging into MapBrowser, create APIs and integrate into your favorite GIS, CAD, or geospatial software platform.

PLUG AND PLAY



1 MapBrowser

Our light-weight web application enables you to explore, measure and keep track of your projects from anywhere in the world. Switch between Nearmap's vertical, oblique, and 3D content in a few clicks. Export georeferenced 2D, 3D and AI content.

2 Esri ArcGIS Marketplace

Stream Nearmap vertical content into ArcGIS products as well as platforms built on top of ArcGIS software. Nearmap Oblique is also accessible via an oblique viewer widget made with ArcGIS Web AppBuilder.

3 WMS (Web Mapping Service)

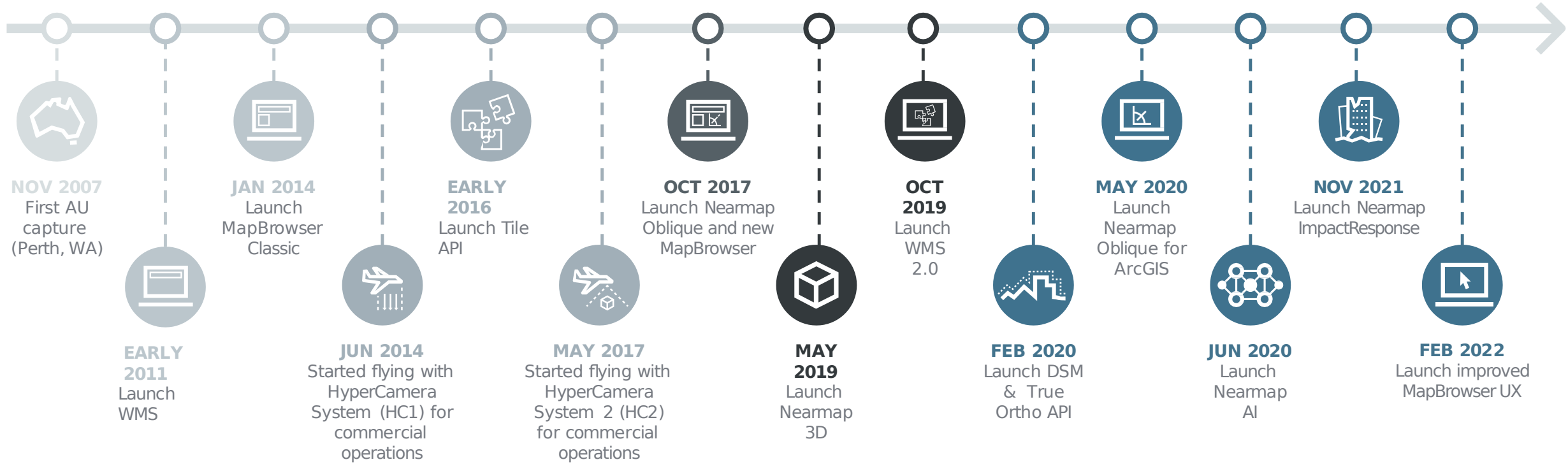
Auto-generate a simple or custom WMS URL using the Nearmap customer portal, then copy and paste that URL into third-party applications to stream Nearmap Vertical content. Perform geofencing and time navigation.



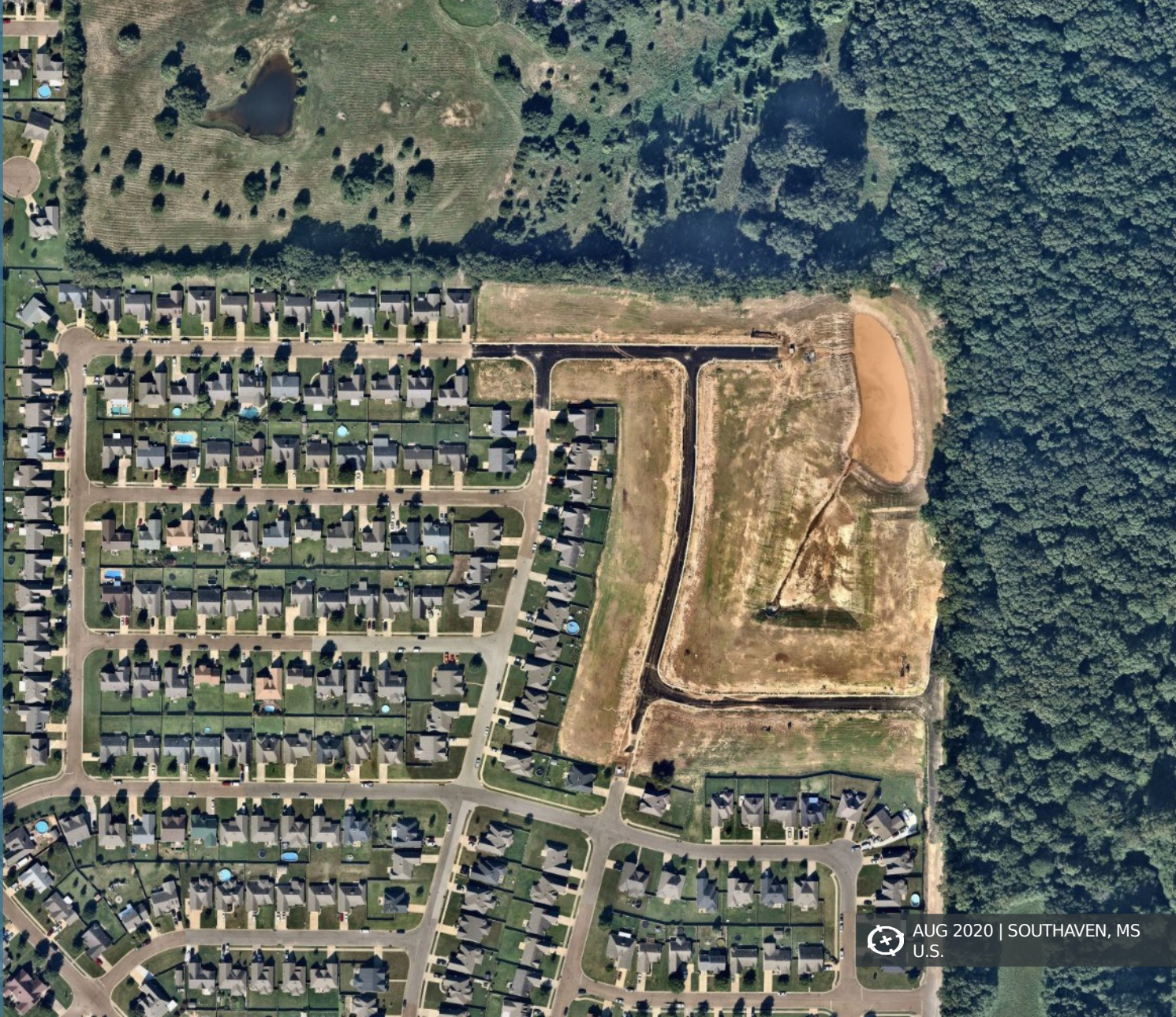
NEARMAP TIMELINE: EVOLUTION OF PRODUCTS


We listen when our customers tell us their requirements and we continually evolve our products to better meet their needs.

NOV 2020 | GRIFFIN, QLD AU



PRODUCTS



 AUG 2020 | SOUTHAVEN, MS
U.S.

Aug 23 2020
© 2020 Nearmap, Inc.



MAY 2021 | ONTARIO, CA
U.S.

VERTICAL/ ORTHO

WHAT IS IT?

- Top-down imagery
- Measure line, area, or radius
- Overlay GIS data
- Integration via WMS/ArcGIS Marketplace into GIS, CAD, Asset mgmt. software

SPECIFICATIONS:

- Resolution: 2.2-3" GSD
- Absolute Horizontal Accuracy: 7.8-19.8 RMSEr

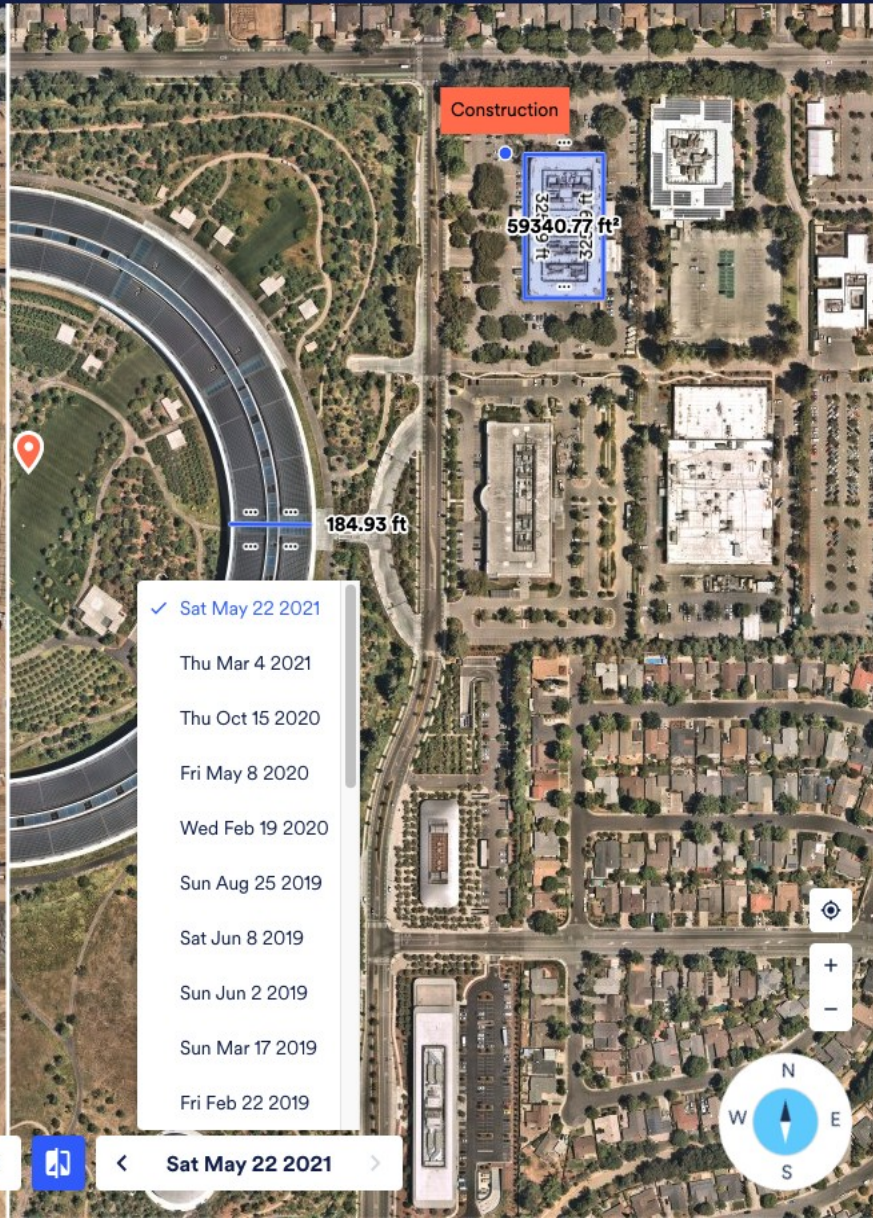
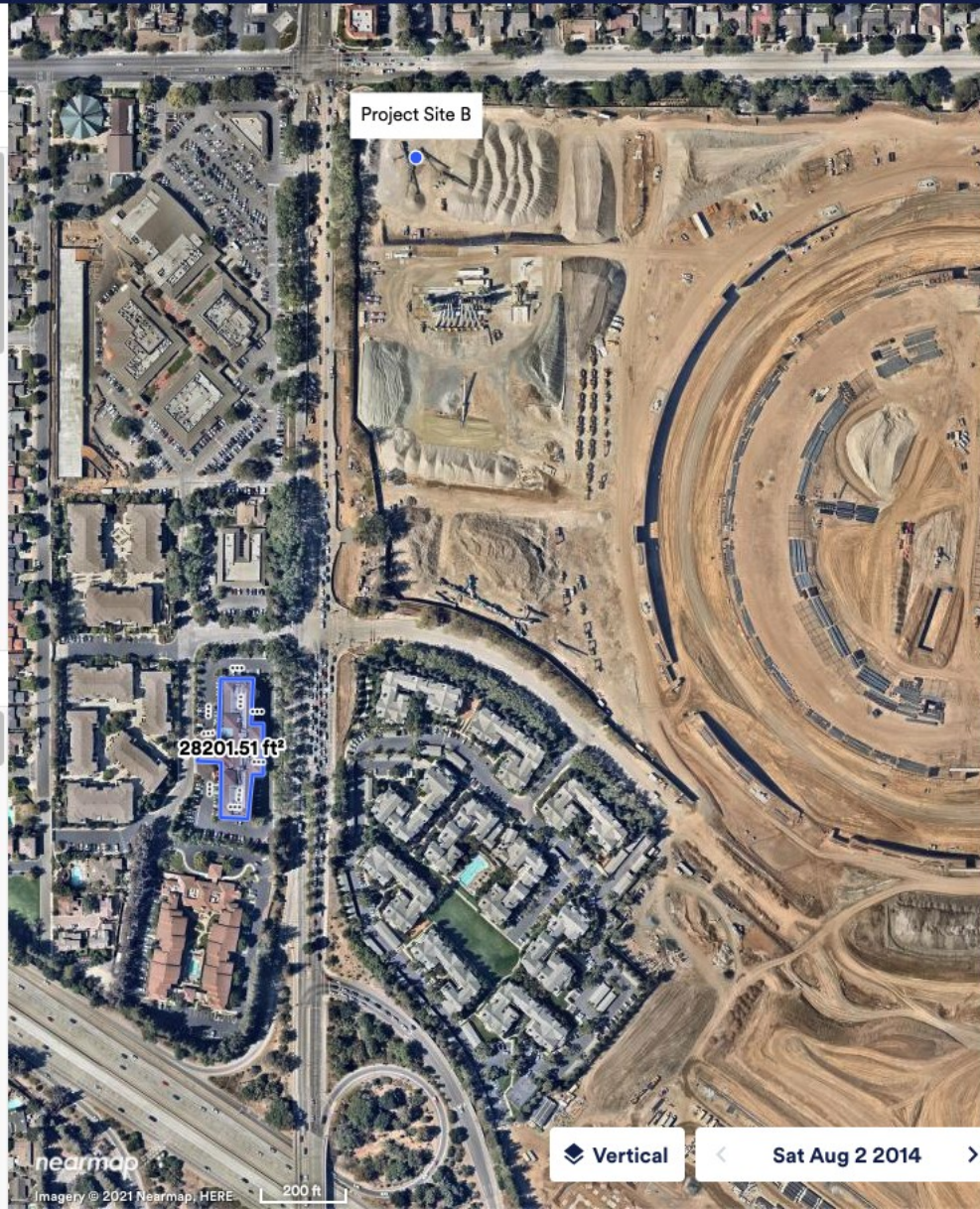
WORKSPACE ←

Feature Layers + ^

- Untitled Layer 1
 - Area
 - Line
 - Line
 - Construction
 - Project Site B
 - Location**
 - Polygon 1
 - Line 2

Data Layers ^

- Boundaries
- Roads Overlay
- AI Layers
 - Tree Overhang
 - Solar Panel
- Construction
 - Construction Crane
 - Construction Vehicle
 - Building Under Const...



Feature Layer ✕

LOCATION

Address
10955 N Tantau Ave, Cupertino, CA 95014, USA

[ADD TO WATCHLIST](#)

Coordinates
37.335170, -122.008676
37° 20' 7", -122° 0' 31"

MapBrowser Link
<https://apps.nearmap.cc> 📄

Source Photo
Mon May 24 2021 11:14 AM (PDT)

[GOOGLE STREET VIEW](#)

[OBLIQUE PHOTOS](#)

Notes



PANORAMA

WHAT IS IT?

- Multi-perspective 30-45° angle views
- View all four cardinal directions
- Seamless pan & zoom
- Mosaic continuous view without “geo-fencing”

SPECIFICATIONS:

- Resolution: 3” GSD

MAY 2021 | CHANDLER, AZ
U.S.



OBLIQUE

WHAT IS IT?

- Multi-perspective 30-45° angle views
- Gallery of individual source images for each cardinal direction
- Measure height

SPECIFICATIONS:

- Resolution: 3" GSD
- Vertical Measurement Accuracy: 6"



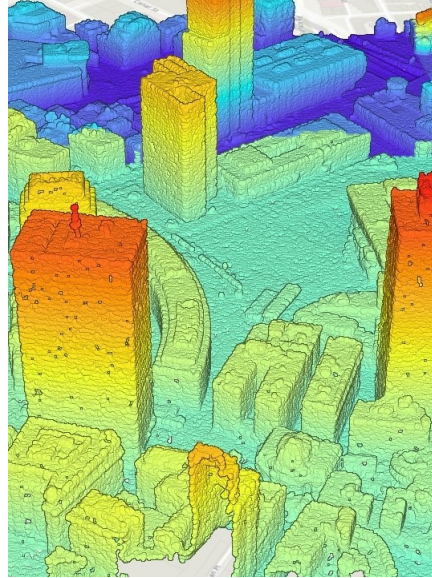
MAR 2021 | CHICAGO, IL
U.S.

NEARMAP 3D FAMILY



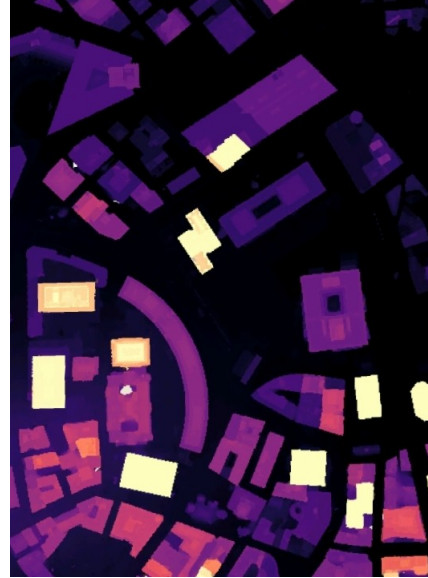
TEXTURED MESH

Textured Mesh is a 3D triangulated wireframe model with high-resolution photo-realistic textures applied, available in multiple formats.



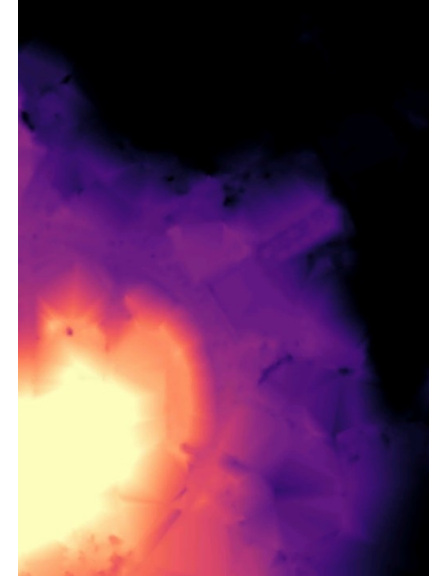
POINT CLOUD

The Nearmap Point Cloud is a vector file made up of points containing X, Y and Z and color values in the LAS format.



DIGITAL SURFACE MODEL

DSM is based on a raster file made up of pixels containing surface elevation values in the GeoTIFF format, including heights of both natural and built objects above sea level.



DIGITAL ELEVATION MODEL

DEM is based on a raster file made up of pixels containing bare earth elevation values in GeoTIFF format.



TRUE ORTHO

True Ortho is based on a raster file made up of pixels containing RGB color values in the GeoTIFF format.

NEARMAP AI

SOURCE OF TRUTH

Datasets are processed at scale, derived at 2.2-3" GSD raster resolution. Available for every image capture June 2020 onwards.

AUTOMATED LOCATION ATTRIBUTES

Toggle on/off AI layers to digitally identify objects and parcel attributes - ensuring assessed values are accurate and all taxable parcel features are detected.

STREAMLINE ASSESSMENT WORKFLOWS

- Reduce site visits
- Wide-scale change detection
- Detect hard to discern parcel features
- Verify permit compliance

An aerial photograph of a city grid with various AI-generated overlays. A semi-transparent blue box in the upper left contains the text 'AUTOMATED INSIGHTS, AT SCALE AND ON-DEMAND'. The map shows buildings in orange, roads in green, and other features in purple and black.

AUTOMATED
INSIGHTS, AT
SCALE AND ON-
DEMAND

NEARMAP AI FAMILY



AI PACKS

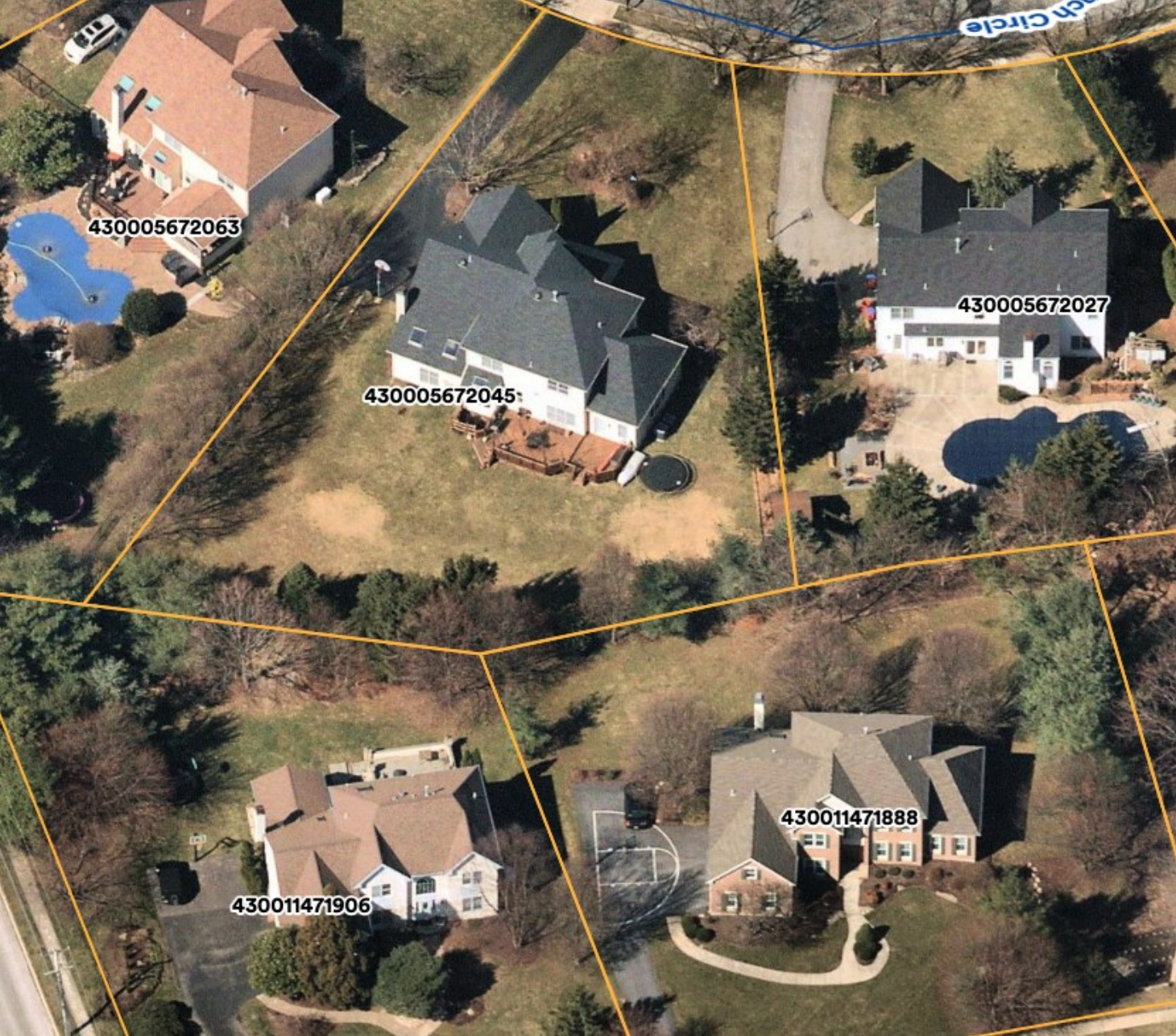
AI-derived attributes are sold as AI Packs:

1. Building Footprints
2. Swimming Pool
3. Solar Panels
4. Ground Surfaces
5. Vegetation
6. Construction Sites
7. Building Characteristics
8. Trampolines
9. Roof Characteristics
10. Roof Condition
11. Poles

ASSESSMENT BUNDLE

- Building Footprints
- Construction Site
- Building Under Construction
- Swimming Pool
- Solar Panels
- Driveways

All AI Packs are available in Raster and Vector formats



GEODATA LINK

WHAT IS IT?

- Integrate your parcel and street data directly into MapBrowser
- Overlay and view data on Nearmap Vertical, Panorama, and Oblique imagery
- Search by parcel ID
- Retrieve/display parcel attribute data

EMBED INTO CAMA

- Integrate MapBrowser URL into CAMA
 - Example: Tyler iasWorld
- Search parcel in CAMA -> click MapBrowser link -> taken to that parcel in MapBrowser

***Currently in Beta Phase**

GEODATA LINK (BETA) - PANORAMA VIEW

The interface displays an aerial view of residential parcels with overlaid parcel boundaries. The central parcel is labeled with the ID 470003893119. Other visible parcel IDs include 470003893101 and 470003893128. The street name Jessica Drive is visible at the top of the view.

Search Bar: 470003893119

Feature Layers: Location

Data Layers:

- Parcels
 - Boundaries
- Montgomery County ... [Preview](#)
- Parcels
 - Boundaries
 - Parcel ID
 - Alt ID
- Streets
 - Street Name

PARCEL DETAILS

[Preview](#)

OBJECTID	89411
TAXPIN	470003893119
Alternate ID	47050C035
Parcel Type	BASE PARCEL
Calculated Acreage	0.21929861
True Calculated Acres	0.2192987
created_user	
created_date	
last_edited_user	
last_edited_date	
Shape.STArea()	9552.651489257812
Shape.STLength()	405.52623229629

Parcel Link

<https://apps.nearmapde>

DTM-Based Height Correction

Enabled

Disabled

Preview
Imagery © 2021 Nearmap, HERE

Panorama [Sat Mar 20 2021](#)

Navigation controls: Location, Snapshot, Text, Line, Polygon, Rectangle, Circle, Height, Width, Export, Downloads.

GEODATA LINK (BETA) - OBLIQUE VIEW

The screenshot displays the Nearmap Geodata Link interface in oblique view. The main map shows an aerial view of a residential area with yellow parcel boundaries. The central parcel is labeled with the ID 470003893119. Other nearby parcels are labeled with IDs 470003893101, 470003893128, and 470003893092. The street name 'Jessica Drive' is visible at the top of the map. The interface includes a search bar at the top left, a toolbar at the top with various tools like Location, Snapshot, Text, Line, Polygon, Rectangle, Circle, Height, Width, Export, and Downloads, and a sidebar on the left with layers and photos. A 'Parcel Info Display' panel is open on the right, showing detailed information for the selected parcel.

Search by Parcel

470003893119
Montgomery County Data/Parcels

Toggle On/Off Parcel & Street Data

Feature Layers +
Data Layers ^
Parcels
 Boundaries
Montgomery County ... Preview
Parcels
 Boundaries
 Parcel ID
 Alt ID
Streets
 Street Name
Photos
North

Parcel Info Display

Data Layer
PARCEL DETAILS
Preview

OBJECTID	89411
TAXPIN	470003893119
Alternate ID	47050C035
Parcel Type	BASE PARCEL
Calculated Acreage	0.21929861
True Calculated Acres	0.2192987
created_user	
created_date	
last_edited_user	
last_edited_date	
Shape.STArea()	9552.651489257812
Shape.STLength()	405.52623229629

Parcel Link
<https://apps.nearmapde>

DTM-Based Height Correction
 Enabled
 Disabled

Oblique Sat Mar 20 2021

Preview Imagery © 2021 Nearmap, HERE 20 ft

USER TESTIMONIALS



MAR 2021 | COLUMBUS, OH, U.S.



“My colleagues at the city have come to rely on our department for a wide array of maps for planning projects and events. Nearmap plays a significant role in enhancing these maps. In fact, 95% of our map requests have Nearmap in them — specifically with the GIS data they provide — which is something I can’t get with Google. Nearmap has become our backbone and the starting point for everything our shop does. It’s way more powerful than google and once people get a taste of it, they crate it and want more and more of it.”

- Betsi Chatham, GIS Manager, City of Grapevine, TX

GROWING PARTNER ECOSYSTEM



